

*mario de cecco*  
dynamic workwear



PERSONAL PROTECTIVE EQUIPMENT



# 50 YEARS OF FAMILY'S SUCCESS

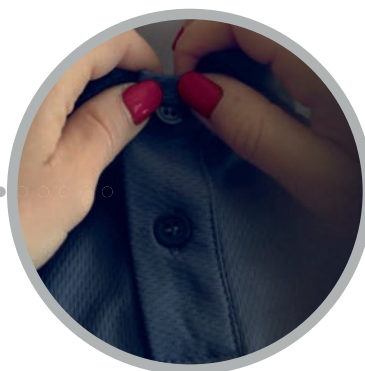
The story of Mario De Cecco SpA is an exciting travel through five decades of activity: a travel under the sign of safety started by Mario De Cecco together with his wife Iolanda, in the early '60s, with the opening of a small but innovative laboratory for the production of work gloves.

To follow the road drawn by Mario, with the same enthusiasm, were his sons Giampiero and Paolo together with their wives and grandchildren.

Thanks to the work and intuitions of an entire family, a small but competitive reality has become an international leader, in the production of workwear, professional, promotional and distribution of ppe safety.







*In Mario De Cecco SpA, each stage is developed internally and studied to ensure maximum customer satisfaction.  
Our Research & Development Department, studies and identifies the most suitable models for clients with customized creative and harmonious solutions.  
The final product is the result of the best Italian design: the choice of state of the art materials, color combinations and accurate finishes, create a new way of conceiving workwear..*



*Some of our partners*

**Honeywell**

**MSA**  
The Safety Company

**U-Power**  
Technological Supremacy

**Panther**  
THE SAFETY SPECIALIST

**Ansell**

**ABOUTBLU**  
Innovating Performance

**MILLER**  
by Honeywell

**3M**

**uvex**  
EXCELLENCE IN PROTECTION

**PORTWEST**  
EXCELLENCE IN PROTECTION

**PROBAN**

**Carrington**

**3M**

**KLOPMAN**  
international

**TENCATE**

**TS**

TEXTIL  
SANTANDERINA  
SINCE 1923

**Nomex**  
DUPONT





WORKWEAR



## WORKWEAR



RED



ORANGE



NAVY



ORANGE



ROYAL

### COTTON COVERALL ART.XCV

LIGHT FABRIC 160 GR  
100% COTTON

MEDIUM FABRIC 250 GR  
100% COTTON

HEAVY FABRIC 400 GR  
100% COTTON

SIZES  
from S to 5XL

### COTTON THERMAL COVERALL ART.X1F

FABRIC  
Outer 400 GR  
100% COTTON  
Inside lining fleece 290 GR  
100% POLYESTER

SIZES  
from S to 5XL



NAVY



RED



ROYAL





## WORKWEAR



ORANGE



NAVY



RED



ROYAL

### COTTON JACKET ART.S69

**LIGHT FABRIC 160 GR**  
100% COTTON

**MEDIUM FABRIC 250 GR**  
100% COTTON

**HEAVY FABRIC 400 GR**  
100% COTTON

**SIZES**  
from S to 5XL



ORANGE



NAVY



RED



ROYAL

### COTTON TROUSER ART.Q6R

**LIGHT FABRIC 160 GR**  
100% COTTON

**MEDIUM FABRIC 250 GR**  
100% COTTON

**HEAVY FABRIC 400 GR**  
100% COTTON

**SIZES**  
from S to 5XL



## WORKWEAR



NAVY

### WINTER JACKET

**FABRIC**

Outer 190 GR

100% POLYESTER

Lining Fabric 60 GR

100% POLYESTER

Filling Fabric 170 GR

100% POLYESTER

EN/343 Class 3:1 X WP 15,000mm

EN/342 0.349M<sup>2</sup>. K/W (B), 2, X

**SIZES**

from S to 4XL





MULTISAFE



## MULTISAFE



ORANGE



EN 11611



EN 11612



EN 1149



NAVY



RED



ROYAL

### F.R. COVERALL ART.XCV

**LIGH FABRIC 160 GR**  
98% COTTON 2% AS  
EN/11612 (A1-B1-C1) - EN/1149

**MEDIUM FABRIC 250 GR**  
99% COTTON 1%AS  
EN/11611 (1-A1) - EN/11612  
(A1-B1-C1-E3-F1) - EN/1149

**HEAVY FABRIC 400 GR**  
99% COTTON 1%AS  
EN/11611 (1-A1)  
EN/11612 (A1-B1-C1-E2-F1) - EN/1149

**SIZES**  
from S to 5XL

**LIGHT FABRIC 180 GR**  
54% COTTON 44% MODACRYLIC 2% AS  
EN/1149 - EN/11612 (A1 - B1 - C1 - E1 - F1)

**MEDIUM FABRIC 260 GR**  
45% COTTON 35% MODACRYLIC  
10% LENZING 8% POLYAMIDE 2% AS  
EN/1149 - EN/11612 (A1-B1-C1-E2-F1)  
EN/11611 (1-A1)

**HEAVY FABRIC 400 GR**  
45% COTTON 35% MODACRYLIC  
10% LENZING 8% POLYAMIDE 2% AS  
EN/1149 - EN/11612 (A1-B1-C1-E2-F1)  
EN/11611 (1-A1)







EN 11611



EN 11612



EN 1149

## MULTISAFE



EN 11611



EN 11612



EN 1149



ROYAL



ROYAL



NAVY



ORANGE



RED

### F.R. JACKET ART.S69

**LIGHT FABRIC 160 GR**  
98% COTTON 2% AS  
EN/11612 (A1-B1-C1) - EN/1149

**MEDIUM FABRIC 250 GR**  
99% COTTON 1% AS  
EN/11611 (1-A1)  
EN/11612 (A1-B1-C1-E3-F1) - EN/1149

**HEAVY FABRIC 400 GR**  
99% COTTON 1% AS  
EN/11611 (1-A1) - EN/11612 (A1-B1-C1-E2-F1)  
EN/1149

**FABRIC 330 GR FOR WELDERS**  
99% COTTON 1% AS  
EN/11611 (1-A1) - EN/11612 (A1-B1-C1-E1-F1)  
EN/1149

**SIZES**  
from S to 5XL

### F.R. TROUSER ART.Q6R

**LIGHT FABRIC 180 GR**  
54% COTTON 44% MODACRYLIC 2% AS  
EN/1149 - EN/11612 (A1 - B1 - C1 - E1 - F1)

**MEDIUM FABRIC 260 GR**  
45% COTTON 35% MODACRYLIC 10% LENZING  
8% POLYAMIDE 2% AS  
EN/1149 - EN/11612 (A1-B1-C1-E2-F1)  
EN/11611 (1-A1)

**FABRIC 330 GR FOR WELDERS**  
45% COTTON 36% MODACRYLIC 10% LYOCCELL  
8% POLYAMIDE 1% AS  
EN/1149 - EN/11612 (A1-B1-C1-D2 - E2-F1)  
EN/11611 (1-A1)

**HEAVY FABRIC 400 GR**  
45% COTTON 35% MODACRYLIC  
10% LENZING 8% POLYAMIDE 2% AS  
EN/1149 - EN/11612 (A1-B1-C1-E2-F1)  
EN/11611 (1-A1)



NAVY



RED



ROYAL



## MULTISAFE



ROYAL



EN 11611



EN 11612



EN 1149



EN342



NAVY



RED



ORANGE

### F.R. THERMAL COVERALL ART.XES

#### FABRIC

Outer 440 GR

99% COTTON 1% AS

Inside lining antistatic fleece 250 GR

45% MODACRYLIC 35% COTTON

16% POLYESTER 4% AS

EN/11611 (1-A1) – EN/11612 (A1-B1-C1-E2-F1)

EN/1149 – EN/342

#### SIZES

from S to 5XL





## MULTISAFE



EN 11612



EN 1149



EN 11611



EN 11612



EN 1149



EN 20471



EN 14058



EN 343



SKY



YELLOW

### F.R. SHIRT ART.V3N

**LIGHT FABRIC 160 GR**  
98% COTTON 2% AS  
EN/11612 (A1-B1-C1) – EN/1149

**FABRIC 180 GR**  
54% COT. 44% MODACRYLIC 2% AS  
EN/1149 – EN/11612 (A1-B1-C1-E1-F1)

**SIZES**  
from S to 5XL



NAVY

### MULTISAFE WINTER JACKET

**ART.J9G**  
WHIT FIXED INTERNAL PADDING

**FABRIC**  
**Outer**  
99% PES. 1% AS  
Inside lining antistatic fleece and flame  
retardant  
100% POLYESTER

EN/11611 (1-A1) – EN/11612 (A1-B1-C1)  
EN/1149 – EN/343 – EN/20471 – EN/14058

**SIZES**  
from S to 5XL



ORANGE





EN 343



EN 13034



EN 14116



EN 20471



EN 14058



EN 343



EN 13034



EN 14116



EN 1149

## MULTISAFE



ORANGE



NAVY

### HV – F.R. WINTER JACKET

**FABRIC**

**Outer 250 GR**

98% POLYESTER, 2% AS, BREATHABLE

**Lining Fabric 170 GR**

100% COTTON FLAME

**Filling Fabric 100 GR**

100% POLYESTER FLAME

EN/14116 - EN/1149 - EN/343 Class 3:1 X

EN/14058 Class 3 - EN/13034 Type 6

EN/20471 Class 3

**SIZES**

from S to 3XL

### F.R. WINTER JACKET

**FABRIC**

**Outer 250 GR**

98% POLYESTER, 2% AS, BREATHABLE

**Lining Fabric 170 gr**

100% COTTON FLAME

EN/14116 - EN/1149 - EN/343 Class 3:3 X

EN/13034 Type 6

**SIZES**

from S to 3XL





HIGH VISIBILITY





EN 20471

## HIGH VISIBILITY



EN 20471



ORANGE



YELLOW/NAVY

### H.V. COVERALL

**FABRIC 240 GR**  
60% COTTON 40% POLYESTER  
EN/20471 CLASS 3

**SIZES**  
From 46 to 64



YELLOW

### H.V. COVERALL BICOLOR

**FABRIC 240 GR**  
60% COTTON 40% POLYESTER  
EN/20471 CLASS 3

**SIZES**  
from S to 3XL



ORANGE/NAVY





EN 20471

## HIGH VISIBILITY



EN 20471



ORANGE



YELLOW/NAVY

### H.V. JACKET

**FABRIC 240 GR**  
60% COTTON 40% POLYESTER  
EN/20471 CLASS 3

**SIZES**  
From 46 to 64



YELLOW

### H.V. JACKET

BICOLOR

**FABRIC 240 GR**  
60% COTTON 40% POLYESTER  
EN/20471 CLASS 2

**SIZES**  
from S to 3XL



ORANGE/NAVY



## HIGH VISIBILITY



EN 20471



ORANGE



YELLOW/NAVY

### HV TROUSER

**FABRIC 240 GR**  
60% COTTON 40% POLYESTER  
EN/20471 CLASS 2

**SIZES**  
From 44 to 64

### HV TROUSER

BICOLOR

**FABRIC 240 GR**  
60% COTTON 40% POLYESTER  
EN/20471 CLASS 2

**SIZES**  
from S to 3XL



YELLOW



ORANGE/NAVY







EN 20471

## HIGH VISIBILITY



EN 20471



YELLOW

### HV POLO SHIRT

**FABRIC 170 GR**  
100% POLYESTER  
EN/20471 CLASS 2

**SIZES**  
from S to 3XL



ORANGE

### HVT-SHIRT

**FABRIC 175 GR**  
100% POLYESTER  
EN/20471 CLASS 2

**SIZES**  
from S to 5XL



ORANGE





EN 20471

## HIGH VISIBILITY



EN 20471



EN 14058



EN 343



ORANGE



YELLOW/NAVY

### H.V. WINTER JACKET

**Outer Fabric** 190 GR  
100% POLYESTER  
**Lining Fabric** 60 GR  
100% POLYESTER  
**Filling Fabric** 170 GR  
100% POLYESTER  
EN/20471 CLASS 3

**SIZES**  
from S to 6XL



YELLOW

### H.V. WINTER JACKET

BICOLOR

**FABRIC**  
100% BREATHABLE POLYESTER,  
HEAT-TAPED SEAMS,  
QUILTED LINING 100% POLYESTER AND  
WADDING PADDING  
EN/20471 CLASS 3 – EN/14058 – EN/343

**SIZES**  
from S to 4XL  
5XL for orange/navy only



ORANGE/NAVY





EN 20471

## HIGH VISIBILITY



EN 20471



ORANGE



YELLOW

### H.V. VEST

**FABRIC 125 GR**  
100% POLYESTER

EN/20471 CLASS 2

**SIZES**  
from S to 5XL



YELLOW

### H.V. EXECUTIVE VEST

**FABRIC 125 GR**  
100% POLYESTER

EN/20471 CLASS 2

**SIZES**  
from S to 5XL



ORANGE





## INSECT PROTECTION



## INSECT PROTECTION



ORANGE

### PERMETHRINE TREATED COVERALL

**FABRIC 250 GR**  
100% COTTON

**SIZES**  
from S to 5XL



ORANGE

### PERMETHRINE TREATED T-SHIRT

**FABRIC 150 GR**  
JERSEY 100% COTTON

**SIZES**  
from S to 5XL



**RAINPROOF**





EN 14116



EN 1149



EN 20471



EN 343



EN 13034

## RAINPROOF



EN 343



ORANGE



NAVY

### F.R. H.V. RAIN SUIT

**FABRIC 260 GR**

100% POLYESTER

EN/20471 CLASS 3 (JACKET)

EN/20471 CLASS 1 (TROUSER)

EN/14116 – EN/1149- EN/13034 TYPE 6

EN/343 CLASS 3:1

**SIZES**

from S to 3XL (orange)

from S to 5XL (yellow)

### H.V. RAIN SUIT

**FABRIC 200 GR**

100% POLYESTER

EN/20471 CLASS 3 (JACKET)

EN/20471 CLASS 1 (TROUSER)

EN/343 CLASS 3:1

**SIZES**

from S to 5XL

### RAIN SUIT

**FABRIC**

100% POLYESTER

EN/343

**SIZES**

from S to 4XL



YELLOW



ORANGE



YELLOW



# UNDERWEAR







EN 11612



EN 1149

## UNDERWEAR

.....



NAVY

### F.R. UNDERWEAR SUIT

**FABRIC 200 GR**

60% MODACRYLIC 39% COTTON 1% AS  
EN/11612 (A1-B1-C1-F1) – EN/1149

**SIZES**

from S to 5XL

### UNDERWEAR SUIT

**FABRIC 200 GR**

50% COTTON 50% POLYESTER

**SIZES**

from S to 5XL





PPE





## PPE

### DISPOSABLE MASKS

.....



### FFP1 NR D RESPIARTORY PROTECTION

EN 149:2001

**MASK TYPE** *Molded cup*

**VALVE** *No*

**STRAPS** *Double elastics*

**MASK SIZE** *Medium*

**PACKAGING** *Box 30 pcs*



### FFP2 NR D RESPIARTORY PROTECTION

EN 149:2001

**MASK TYPE** *Molded cup*

**VALVE** *No*

**STRAPS** *Double elastics*

**MASK SIZE** *Medium*

**PACKAGING** *Box 30 pcs*



### FFP3 NR D RESPIARTORY PROTECTION

EN 149:2001

**MASK TYPE** *Molded cup*

**VALVE** *No*

**STRAPS** *Double elastics*

**MASK SIZE** *Medium*

**PACKAGING** *Box 30 pcs*



### SURGICAL MASK

EN 14683 TYPE II R STANDARD  
NOT STERILE

*device class 1 directive 93/42*

**PACKAGING:** *Box 10 pcs*



## PPE

HAND PROTECTION



GREEN

### NITRILE GLOVES CHEMICAL RISK

EN ISO 374-5 MICRO ORGANISMS (PASS)  
EN 420 (DEXTERITY 5)  
EN388:2016 +A1:2018 - (3101X)  
EN ISO 374-1:2016 TYPE A (AJKLMNOT)

*Chemical resistant gauntlet with textured pattern for enhanced grip. Flock lined for added comfort. For use in the chemical, oil and food industries.*

**SIZES:**  
from S/7 to XXL/11



BLUE

### PVC GLOVES CHEMICAL RISK

EN ISO 374-5 MICRO ORGANISMS (PASS)  
EN 420 (DEXTERITY 5)  
EN388:2016 +A1:2018 - (4.1.2.1.X)  
EN ISO 374-1:2016 TYPE B (A.J.K.L)

*Premium quality PVC chemical gauntlet. Excellent dexterity with secure grip from the sandy palm finish. Seamless liner ensures comfort and flexibility.*

**SIZES:**  
from S/7 to XXL/11



GREEN

### HEALTHCARE E.NV-RIVERSIDE BUSINES GLOVES

EN 420:2003 + A1:2009; CATEGORIA III  
EN 347-5:2016  
EN 388 (4111B)  
EN 388 (4111)  
EN 407 (X1XXXX)

*Compliant with USA FDA food handling requirements. Curved, pre-flexed fingers and wing thumb reduce hand fatigue for extra worker comfort. Rugged glove with chemical protection. Superior dexterity and the high levels of wet and dry grip contribute to wearer safety and ultimately to the overall productivity*

**SIZES:**  
from S/7 to XXL/11



YELLOW/BLUE

### LATEX GLOVES CHEMICAL RISK

EN ISO 374-5 MICRO ORGANISMS (PASS)  
EN 420  
EN388:2016 +A1:2018 - (1.0.1.0.X)  
EN ISO 374-1:2016 TYPE A (AKLMNPST)

*Double dipped latex gauntlet with anti slip pattern for good grip in wet and dry conditions. Ideal for the chemical industry, food processing and industrial cleaning. Chlorinated for improved durability.*

**SIZES:**  
from S/7 to XL/10





## PPE

HAND PROTECTION



BLUE

### LATEX GLOVES WATERPROOF

EN 420 (DEXTERITY 5)  
EN388:2016 +A1:2018 - (4131X)  
CE

*Offers maximum liquid protection, The smooth latex is fully coated before a second latex foam palm dip is applied, this process ensures maximum and superior grip is achieved. An elasticated wrist provides for a secure fit.*

**SIZES:**  
from S/7 to XXL/11



GREY/BLACK

### CUT PROTECTION (E) GLOVES

EN 420 (DEXTERITY 5)  
EN388:2016 +A1:2018 - (4.X.4.3.E)

*Free from glass or steel fibres, this premium cut resistant glove offers exceptional Cut Level E protection. The nitrile foam coating ensures excellent grip in wet and dry conditions. The 15 gauge seamless breathable liner ensures outstanding dexterity for the wearer.*

**SIZES:**  
from XS/6 to XXL/11



BLACK

### PU GLOVES GENERIC USE

EN 420 (DEXTERITY 5)  
EN388:2016 +A1:2018 - (3131X)

*Perfect for intricate tasks where dexterity and breathability are essential.*

**SIZES:**  
from XXS/5 to 3XL/12



BLACK

### WINTER GLOVES

EN388:2016 +A1:2018 - (4242X)  
EN 407 (X2XXXX)  
EN 511 (X2X)  
EN 420

*Twin liner traps in heat. A 3/4micro foam nitrile dipping offers full protection to the fingers and improved liquid protection. Open back for breathability*

**SIZES:**  
from L/9 to XXL/11



## PPE

### HAND PROTECTION



NAVY

## ActivArmr® Hycron® GLOVES

EN 388 (4221)

EN 420:2003 + A1:2009; CATEGORIA II

A big tough glove for a rough, tough life: three times more durable than heavy-duty leather. Unique Ansell nitrile formulation. Offers superior resistance to sharp and abrasive materials. Stronger and more flexible than PVC. Also provides excellent barrier to grease and oil, and does not degrade like leather or cotton. Made without silicone. Guaranteed clean for metals and motor manufacture

SIZES:

8-9-10



NAVY

## NBR GLOVES

EN388:2016 +A1:2018 - (4111X)

EN 420

Fully coated nitrile knitwrist glove designed for applications that require additional abrasion resistance. Tough nitrile coating prevents grease, oil and water penetration. Suitable for refuse collection, utilities and maintenance.

SIZES:

8-9-10



GREY

## SPLIT LEATHER GLOVES

EN 420

EN388:2016 +A1:2018 - (2.2.4.3.X)

Designed with premium quality split leather this glove features vein protection with a cotton back for increased comfort and breathability. Ideal for use in industries including construction, landscaping, agriculture and forestry.

SIZES:

XL/10,5



GREY

## GRAIN LEATHER GLOVES

EN388:2016 +A1:2018 - (2132X)

EN 420

This leather driver is made from goat skin, one of the softest and strongest leathers available on the market.

SIZES:

from M/8 to XXL/11



RED

## WELDING GLOVES

EN388:2016 +A1:2018 - (3.2.4.3.X)

EN 388:2003 - (4.2.4.3)

EN 407 (4.1.3.2.4.4.)

EN 420

EN 12477 TYPE A

Leather welding gauntlet with a one piece back and full cotton lining for comfort

SIZES:

3XL/12

**PPE**  
HAND PROTECTION



GREY/BLACK



GREY

## IMPACT CUT RESISTANT GLOVE

EN 420  
EN388:2016 +A1:2018 - (4.X.4.2.C.P.)  
EN 511 (X.2.X.)

*Combining comfort, grip, impact and cut resistance in a comfortable seamless liner.  
Flexible PVC impact pods and reinforced crotch for maximum durability.  
Suitable for heavy duty applications.*

**SIZES:**  
from S/7 to 3XL/12

## RINGERS GLOVES

EN 388 (4X43DP)  
EN 388 (4543)  
EN 420:2003 + A1:2009; CATEGORIA II

*Innovative impact and cut protection combined with superior dexterity for ultimate comfort in a variety of end uses*

**SIZES:**  
From 7 to 13





## PPE

### HEAD PROTECTION



ROYAL



ORANGE



YELLOW

### HELMET

EN/397

Manufactured from a strong PE shell, it has a comfortable 6 point plastic harness with an adjustable buckle (54-62 cm).  
Sweat band included.



RED



GREEN



BLACK

### VGARD FAS-TRAC HELMET

EN/397

Polyethylene shell provides superior impact protection  
Self-adjusting crown straps ensure a comfortable fit



GREY



GREEN



YELLOW



RED



## PPE VISOR



### VISOR HOLDER (COMPLETE VISOR)

EN/166

Slot adapters compatible with all MSA helmets and included in each frame package.  
Suitable for electrical applications as standard frame contains no metal parts.  
Sloped design makes it easy to clean the frame as rubbish just slides off the frame.  
Works with or without earmuffs: adapter is stowable in case you use earmuffs, no more lost parts.  
Standard frames can be ordered with or without debris control.  
Replaceable debris control creates a tight seal between helmet and frame reducing potential ingress of contaminants.  
Elevated Temperature (ET) version designed to withstand temperatures of 177 °C without warping, cracking or crazing.

### ONLY VISOR

EN 166 (2C-1.2 -1B)



## PPE EYE PROTECTION



### SAFETY GLASSES CLEAR/DARK

EN/166 1F  
EN/170 2C-1.2 (CLEAR)  
EN/172 5-3.1 (DARK)

*Super lightweight and durable spectacle with a sleek design and 10 base curve lens. Larger fitting size for a perfect custom fit.*



CLEAR



### WELDING GLASSES

EN/166 1F  
EN/169 SHADE 5

*Multipurpose. Lens with lateral protection and adjustable arms for customised comfort*



### DARK/NEUTRAL LENS GLASSES

EN166 EN170 EN172  
MOD.5X8 U EN166 FT CE  
2C-3/5-3.1 U 1 FT K N CE

*Over-moulded nose pad for comfort without pressure, adjustment of temples in length and inclination, winning and ergonomic line to adapt to all users and SoftPad technology*



NEUTRAL



### GREEN LENS GLASSES

EN166 EN170  
U EN166 FT CE  
2C-1.2 U 1 FT K N CE

*Over-moulded nose pad for comfort without pressure, adjustment of temples in length and inclination, winning and ergonomic line to adapt to all users and SoftPad technology*





PPE

HEARDING PROTECTION



## NOISE PROTECTION EAR PHONES

SNR 28dB

EN 352-1



## VIKING V1 HEADPHONES

SNR 30dB

EN 352-1



## NOISE PROTECTION EAR

SNR 33dB

EN 352-1



## EAR PADDING WHITE



## PPE

HEARDING PROTECTION



### **EARPLUG**

SNR 36dB

EN 352-2



### **BILSOM 303 EAR PLUGS**

SNR 33dB

EN 352-2



### **EAR EAR PHONES**

SNR 27dB

EN 352-2



**PPE**  
SAFETY FOOTWEAR

.....



## HIGH SHOES S3 SRC

UNI EN ISO 20345:2011

UPPER: Full grain leather cowhide leather

SOLE: Double density polyurethane

TOE CAP: Steel

MIDSOLE: Stainless less

**SIZES:**

from 34 to 49



## SAFETY SHOES S3 SRC

UNI EN ISO 20345:2011

UPPER: Water leather breathable repellent

SOLE: PU/PU-Anti-static, dual, density polyurethane. Expanded polyurethane midsole, guarantees both total comfort and shock absorption on any kind of surface. Outsole with special transparent polyurethane mixture, resistant to corrosion by oils and hydrocarbons. Shock absorption in the heel area.

Reaches excellent slip resistant results with SRC certification, at the maximum levels of the sector.

TOE CAP: Power Cap Composite, ultra-lightweight, undetectable by metal detectors, shock absorption max.

200 Joules, exceptional elastic memory capacity.

MIDSOLE: Multilayer composite with zero perforation. Extremely flexible, lightweight

**SIZES:**

from 38 to 48





## PPE

### SAFETY FOOTWEAR



## SAFETY BOOTS S3 SRC

UNI EN ISO 20345:2011

UPPER: in full grain leather  
SOLE: PU  
TOE CAP: Steel  
MIDSOLE: Steel

SIZES:  
from 38 to 47



## WINTER SAFETY BOOTS S3 C1 SRC

UNI EN ISO 20345:2011

UPPER: in full grain leather  
SOLE: sole cold insulating Insulation of the sole against cold  
Outsole resistant to hydrocarbons Antistatic outsole Energy absorbing heel  
TOE CAP: Steel  
MIDSOLE: Steel

SIZES:  
from 38 to 47



## SAFETY BOOTS S3 SRC

UNI EN ISO 20345:2012

UPPER: Breathable water-repellent full leather.  
LINING: UNLINED

SOLE: Anti-static, dual density polyurethane. Expanded polyurethane midsole, guarantees both total comfort and shock absorption on any kind of surface. Outsole with special transparent polyurethane mixture, resistant to corrosion by oils and hydrocarbons. Shock absorption in the heel area. Reaches excellent slip resistant results with SRC certification, at the maximum levels of the sector.

TOE CAP: Composite POWER CAP, ultra-lightweight, undetectable by metal detectors, shock absorption max. 200 Joules, exceptional elastic memory capacity. Maximum safety even at extreme temperatures.  
MIDSOLE: Multi layer composite WITH ZERO PERFORATION. Extremely flexible, lightweight, imperceptible during walking. Moreover, it guarantees perfect thermal insulation. Shock absorbent heels Oil and fuel resistant sole Antistatic shoe Steel or composite midsole

SIZES:  
from 38 to 48



## BOOT BTP S3 SRC

UNI EN ISO 20345:2012

UPPER: breathable, water-repellent nabuck effect suede leather

LINING: textile with thinsulate thermal insulator which guarantees warmth and comfort even at a temperature of max -30°

INSOLE: antibacterial, absorbent thermoformed, which ensures the wearer's foot remains dry at all times.

SOLE: antistatic dual density polyurethane. expanded polyurethane midsole, guarantees both total comfort and shock absorption on any kind of surface. hi grip, compact polyurethane outsole, for greater resistance against wear and tear, resistant to corrosion by oils and hydrocarbons. shock absorption in the heel area.

TOE CAP: composite, ultralight, undetectable by metal detectors, impact resistance max 200 joules, exceptional elastic memory capacity.

MIDSOLE: multi layer composite midsole. extremely flexible, lightweight, imperceptible during walking. moreover, it guarantees perfect thermal insulation.

SIZES:  
from 38 to 48



**PPE**  
SAFETY FOOTWEAR

.....



## RUBBER BOOTS S5

EN ISO 20345

UPPER: PVC/Nitrile  
SOLE: PVC/Nitrile  
TOE CAP: Steel  
MIDSOLE: Steel

SIZES:  
from 36 to 48



## RUBBER BOOTS S5

EN ISO 20345

UPPER: Polyurethane  
SOLE: Polyurethane  
TOE CAP: Steel  
MIDSOLE: Steel

SIZES:  
from 36 to 48



## PPE SAFETY FOOTWEAR

INFINERGY E-TPU FOAM SOLE  
MADE UP OF THOUSANDS OF TINY  
CELLS OF ENCLOSED AIR THAT  
DAMPEN SHOCK IMPACT AND  
BOUNCE THE ENERGY BACK ON  
EVERY STEP.

**RED LION**

PU/PU NEXT GENERATION POLYMER

### SLIP RESISTANCE

SRC (SRA+SRB)	SRA		EUROPEAN STANDARDS	RED LION
	TEST FLOOR CERAMICS	Flat	0,32	0,68
	LUBRICANT WATER + DETERGENT	Heel	0,28	0,44
		CONTACT ANGLE 7°		
SRB	TEST FLOOR STEEL	Flat	0,18	0,24
		Heel	0,13	0,15
		CONTACT ANGLE 7°		

SLIP RESISTANCE REQUIREMENTS ACCORDING TO THE  
EN ISO 20345:2011 METHOD REQUESTED BY EN 13287:2012

NICKEL  
FREE

Infinergy.  
Made with Infinergy® by S400

PATENTED



EN ISO 20345:2011 CE



### STRONG SHOES S3 SRC C1 ESD

UPPER High abrasion resistant  
PU TEK® PLUS, water resistant and breathable  
SAFETY TOE CAP  
AirToe Aluminium PIERCE-RESISTANCE  
Save & Flex® PLUS  
FOOTBED WOW  
SOLE PU/PU + Infinergy®

SIZES:  
from 38 to 48



### KINDLE SHOES S3 SRC C1 ESD

UPPER High abrasion resistant PU TEK® PLUS,  
water resistant and breathable  
SAFETY TOE CAP AirToe Aluminium  
PIERCE-RESISTANCE  
Save & Flex® PLUS  
FOOTBED WOW  
SOLE PU/PU + Infinergy®

SIZES:  
from 35 to 48



### PRIME SHOES S3 SRC C1 ESD

UPPER High abrasion resistant  
PU TEK® PLUS, water resistant and breathable  
SAFETY TOE CAP AirToe Aluminium  
PIERCE-RESISTANCE  
Save & Flex® PLUS  
FOOTBED WOW  
SOLE PU/PU + Infinergy®

SIZES:  
from 38 to 48





## PPE SAFETY FOOTWEAR



**RED 360**

INFINERGY E-TPU FOAM SOLE  
MADE UP OF THOUSANDS OF TINY  
CELLS OF ENCLOSED AIR THAT  
DAMPEN SHOCK IMPACT AND  
RETURN THE ENERGY BACK ON  
EVERY STEP.

**PU/PU NEXT GENERATION POLYMER**



- 90° DEGREE ANGLE BLOCK PROFILE TO INCREASE ADHESION
- MULTILEVEL STABILISING CHANNELS TO IMPROVE ANTI SLIP FEATURES
- PREFORMED HEEL HEIGHT 6MM MULTIPURPOSE
- 90° DEGREE ANGLE BLOCK PROFILE TO INCREASE ADHESION

**SLIP RESISTANCE**

		EUROPEAN STANDARDS		RED 360
SRC (SRA+SRB)	SRA TEST FLOOR CERAMICS LUBRICANT WATER + DETERGENT	Flat	0,32	<b>0,68</b>
		Heel CONTACT ANGLE 7°	0,28	<b>0,44</b>
	SRB TEST FLOOR STEEL LUBRICANT GLYCERIN	Flat	0,18	<b>0,24</b>
		Heel CONTACT ANGLE 7°	0,13	<b>0,15</b>

SLIP RESISTANCE REQUIREMENTS ACCORDING TO THE  
EN ISO 20345:2011 METHOD REQUESTED BY EN 13287:2012





EN ISO 20345:2011 CE



### MILO SHOES S3 SRC C1 ESD

UPPER High tenacity PUTEK®  
mini spider, water resistant, breathable and  
heel shock shield  
SAFETY TOE CAP AirToe Aluminium  
PIERCE-RESISTANCE Save & Flex® PLUS  
FOOTBED  
WOW SOLE PU/PU + Infinergy®

**SIZES:**  
from 35 to 48



### KRUG SHOES S3 SRC C1 ESD

UPPER High tenacity PUTEK®  
mini spider, water resistant, breathable and  
heel shock shield  
SAFETY TOE CAP AirToe Aluminium  
PIERCE-RESISTANCE Save & Flex® PLUS  
FOOTBED  
WOW SOLE PU/PU + Infinergy®

**SIZES:**  
from 35 to 48



### PROJECT SHOES S3 SRC C1 ESD

UPPER High tenacity PUTEK®  
mini spider, water resistant, breathable and  
heel shock shield  
SAFETY TOE CAP AirToe Aluminium  
PIERCE-RESISTANCE Save & Flex® PLUS  
FOOTBED  
WOW SOLE PU/PU + Infinergy®

**SIZES:**  
from 35 to 48

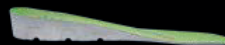


## PPE SAFETY FOOTWEAR

**RED INDUSTRY**



Patent Pending



NICKEL FREE

PU/PU NEXT GENERATION POLYMER


90° DEGREE ANGLE  
BLOCK PROFILE  
TO INCREASE  
ADHESION

MULTILEVEL  
STABILISING  
CHANNELS  
TO IMPROVE ANTI SLIP  
FEATURES

PREFORMED HEEL  
HEIGHT 6MM  
MULTIPURPOSE

90° DEGREE ANGLE  
BLOCK PROFILE  
TO INCREASE  
ADHESION

A

THE INSOLE  CONSISTS OF  
**TWO ELEMENTS:**  
- AN ARCH STRUCTURE IN SOFT DYNAMIC  
COMPOUND, WITH SELF-MODELLING  
PROPERTIES.  
- AN INSERT MADE WITH A  
REVOLUTIONARY BASF COMPOUND THAT  
GUARANTEES ANTI-FATIGUE PROPERTIES.

### SLIP RESISTANCE

SRC (SRA+SRB)	SRA TEST FLOOR CERAMICS LUBRICANT WATER + DETERGENT	Flat CONTACT ANGLE 1°	EUROPEAN STANDARDS ≥ 0,32	RED INDUSTRY <b>0,45</b>
	SRB TEST FLOOR STEEL LUBRICANT GLYCERIN	Flat CONTACT ANGLE 1°	≥ 0,18	<b>0,44</b>
		Heel CONTACT ANGLE 1°	≥ 0,13	<b>0,21</b>

SLIP RESISTANCE REQUIREMENTS ACCORDING TO THE  
EN ISO 20345:2011 METHOD REQUESTED BY EN 13287:2012

EN ISO 20345:2011 CE

**Wow2  
Green**

ANATOMICAL INSOLE WITH AN  
ANTIFATIGUE INSERT



### DENVER SHOES S1P SRC ESD

UPPER Soft, breathable suede leather with mesh  
inserts  
SAFETY TOE CAP AirToe Composite  
PIERCE-RESISTANCE  
Save & Flex® PLUS  
FOOTBED Antifatigue WOW2  
SOLE PU compact Antislip,  
antistatic and oil resistant

SIZES:  
from 35 to 48



### MARSIGLIA SHOES S1P SRC ESD

UPPER Ultra breathable nylon and highly abrasion  
resistant MATRIX microfiber  
SAFETY TOE CAP AirToe Composite  
PIERCE-RESISTANCE  
Save & Flex® PLUS  
FOOTBED Antifatigue WOW2  
SOLE PU compact Antislip,  
antistatic and oil resistant

SIZES:  
from 35 to 48



### NAIROBI SHOES S1P SRC ESD

UPPER Soft suede upper with Nylon inserts  
SAFETY TOE CAP AirToe Composite  
PIERCE-RESISTANCE  
Save & Flex® PLUS  
FOOTBED Antifatigue WOW2  
SOLE PU compact Antislip,  
antistatic and oil resistant

SIZES:  
from 38 to 48



## PPE

FALL PROTECTION

.....



### HARNESS

EN/361

Shoulder straps: standard green PES 44 mm with PTFE treatment (water repellent / stain resistant) Breaking strength:> 2700 daN; safety product for protection against industrial falls  
Weight: 0.96 kg Breaking strength:> 15 KN  
Steel coupling buckles: finish: zinc plated silver breaking strength:> 900 daN  
Rear anchor D-ring: Material: steel Finish: zinc plated silver Breaking strength:> 2300 daN



### ADJUSTABLE LANYARD WITH ABSORBER

EN 355

polyamide rope diameter 14 mm, 3 strands  
Breaking strength : >3200 daN  
The adjuster allows the lanyard to be adjusted  
Shock absorber, maximum impact 600 daN  
Standard Karabiner Breaking strength : 2250 daN, opening 17 mm



### HARNESS

EN 361

Lightweight harness with a sliding dorsal DRing.  
Features two chest loops and an adjustable quick release chest strap.  
Constructed using polyester webbing straps.



### LANYARD

EN 358

EN 354 PASS

This 150cm lanyard is made from Polyester rope with two carabiners at each end.





## PPE

DISPOSABLE WORKWEAR



### DISPOSABLE COVERALL

*Made up of millions of polyethylene fibres that are spunbonded giving an excellent barrier, toughness and strength in all directions. Elasticated hood, ankles, cuffs and waist, along with a two-way front zip and sealable front flap.*

**EN 13034 TYPE 6B**  
**EN ISO 13982 TYPE 5B**  
**EN 1073-2**  
**EN 14126**  
**EN 1149 -5**











*mario de cecco*  
dynamic workwear



MARIO DE CECCO S.P.A.  
Via P. Nenni, 61  
66020 San Giovanni Teatino (CH)  
Italy  
Tel. +39 085 444 51  
Fax +39 085 44 45 227

Confezioni Mario De Cecco   
confezionimariodececco 

---

**[www.dececco.net](http://www.dececco.net)**  
[mail@dececco.net](mailto:mail@dececco.net)

